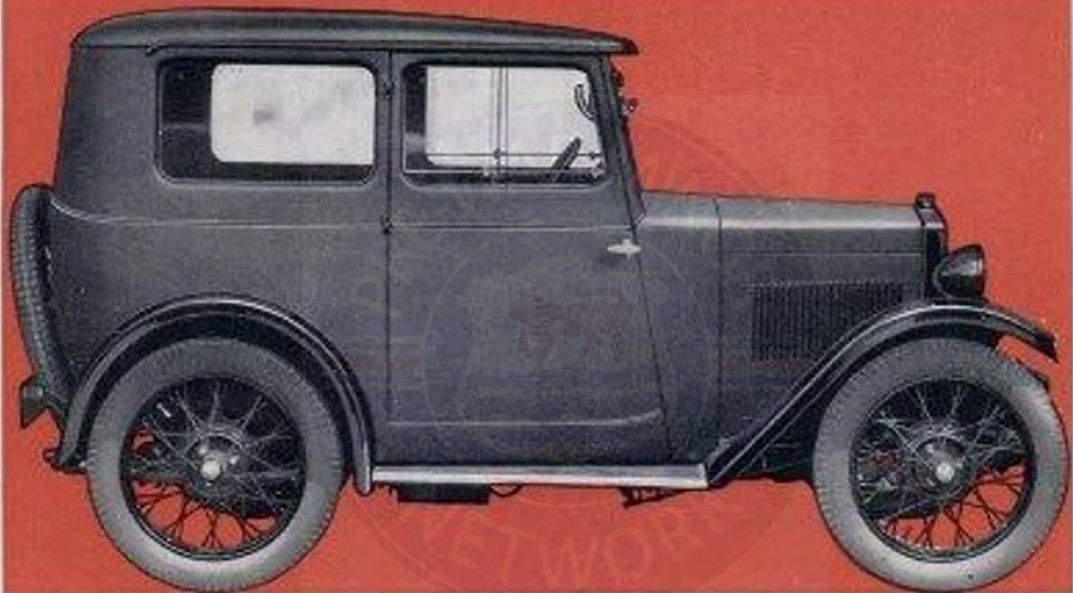




**choose a  
car from  
the new  
Morris Minor  
S.V. range**







## FABRIC SALOON

The equipment includes:—Two double-panel sliding door-windows, window locks, two quarter-lights and adjustable single-panel windscreen of Triplex adjustable bucket-type front seats, speed-oil gauge, two-level petrol tap, automatic rear wiper, chassis lubricating pump, mirror, progressive shock absorbers on all wheels, Lucas electric horn, six-volt lighting, 2 and coil ignition set, coil indicator light,

**£114**

(Ex Works)

combined head- and sidelamps, instrument lamp, license holder, five detachable wire wheels, five Dunlop cord balloon tyres, spare wheel carrier, jack, tyre pump, tool locker and complete kit of tools.

**COACHWORK.** Black fabric with Red Karhyde upholstery. Radiator and windscreen finished in rust-resisting Black. Triplex safety glass windscreen and windows.





## COACHBUILT SALOON (Folding Head)

The equipment includes:—Two double-panel sliding door-windows, two quarter-lights, window locks, folding head, single-panel windscreen, adjustable bucket-type front seats, speedometer, oil gauge, two-level petrol tap, automatic windscreen wiper, chassis lubricating pump, driving mirror, progressive absorbers on all wheels, Lucas Sparionic horn, six-volt lighting, steering, and coil in equipment, coil indicator light, combined

# £119

(Ex Works)

head and sidelamps, instrument lamp, licence holder, five detachable wire wheels, five Dunlop cord lagoon tyres, spare wheel carrier, jack, tyre pump, tool locker, and complete kit of tools.

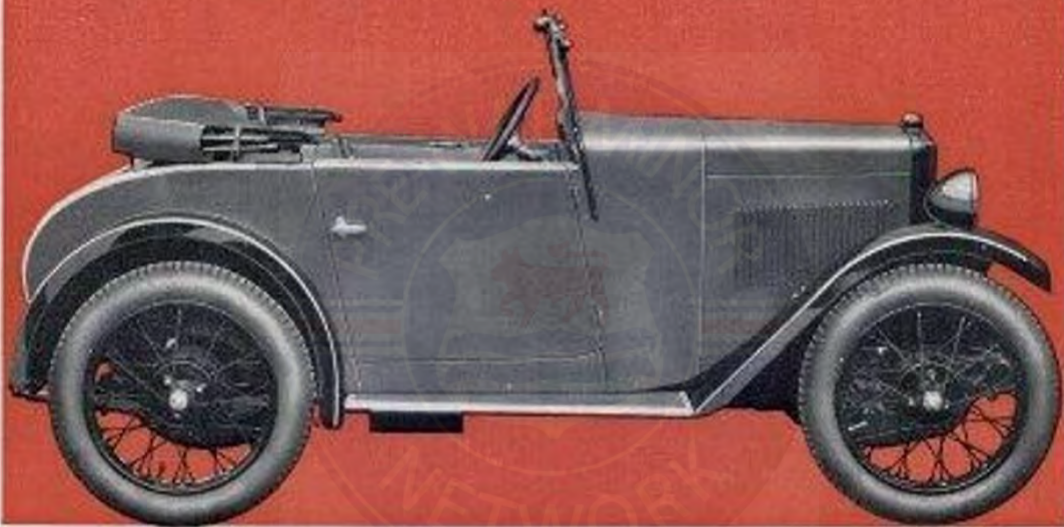
**COACHWORK.** Naval Grey cellulose with Red Kautode upholstery. Radiator and windscreen in rust-resisting Black. Triplex and glass windscreen and windows.

All prices and/or specifications are subject to alteration without notice.





# THE MORRIS MINOR S.V.



## COACHBUILT TWO-SEATER

The equipment includes:—Hood and sidescreens with signalling panel, hood cover, single-panel Triplex glass windscreen, speedometer, oil gauge, two-level petrol tap, automatic windscreen wiper, pressure lubricating system, license holder, driving mirror, five shock absorbers on all four wheels. Standard electric horn, six-volt lighting, 2 and coil ignition set, coil indicator light,

# £100

(Ex Works)

combined head- and sidescreens, instrument lamp, five detachable wire wheels, low Dunlop cord balloon tyres, spare wheel carrier (in rear locker), jack, tyre pump and complete tool kit.

**COACHWORK.** Naval Grey cellulose with Red Karlyde upholstery. Radiator and windscreen in rust-resisting Black finish. Triplex safety of windscreen.





# COACHBUILT TOURER

The equipment includes:—Hood and sidescreeens with signalling panels, hood cover, single-panel Triplic glass windscreen, speedometer, oil gauge, two-level petrol tap, automatic windscreen wiper, pressure lubricating pump, license holder, driving mirror, progressive shock absorbers on all four wheels, Spartan electric horn, six-volt lighting, ig, and coil ignition set, coil indicator light.

**£112** 10s.

(Ex Works)

combined head- and sidelamps, instrument lamp, five detachable wire wheels, five Dunlop cord balloon tyres, spare wheel carrier, jack, tyre pump and complete tool kit.

**COACHWORK.** Naval Grey cellulose with Blue Karbye upholstery. Radiator and windscreen in rust-resisting Black finish. Triplic safety oil windscreen.





