

## WHERE THE NEW £100 MORRIS DIFFERS FROM THE PRESENT MINOR

No Deliveries for Some Weeks. Only One Model—An Open Two-seater, with All External Metal Parts Finished Black

**I**N the previous issue we announced the fact that the dream of the £100 car had at long last materialized, the sponsors being Morris Motors, Ltd.

The new car is to be known as the Morris Minor S.V. (side-valve), to

and on its armature spindle is mounted the fan—a method that is becoming increasingly popular.

The suspension system consists of semi-elliptic springs fore and aft controlled by shock absorbers. The wheel-

So as to make it a thoroughly easy car to maintain all external metal parts, including the radiator, are finished in black.

Perusal of the two following specifications will show where the new £100 car differs from the existing Morris Minor two-seater priced at £125.

### Where the Specification Differs.

Price: £100 as against £125.

Engine: Side instead of overhead valves.

Dynamo: Mounted in a bracket on the cylinder head with the fan on the spindle. Drive by belt.

Bodywork: Coachbuilt instead of fabric-covered cellulose finish.

Equipment: Three-lamp set, no Calorimeter, no front bumpers, all external metal parts finished black instead of chromium plating.

Colour: Naval grey instead of black and red.

### Where the Specification is Similar.

Bore and stroke and tax: 57 mm. and 83 mm., 847 c.c., £8.

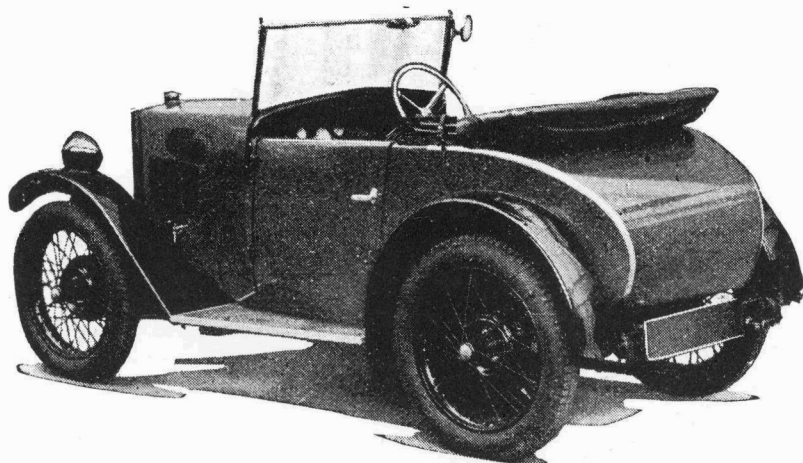
Gearbox: Three forward speeds, unit construction, central gear-change.

Ignition: Coil; carburetter, S.U.

Suspension: Semi-elliptic springs with shock absorbers.

Brakes: On all four wheels; wheels, detachable wire; spare housed in boot.

Bodywork: Two doors, upholstery in Karhyde leather, wings and running boards.



A three-quarter rear view of the new Morris Minor S.V. two-seater showing the rounded tail, rear number plate mounting and the neat manner in which the hood folds.

distinguish it from the existing model, which has an engine with overhead valves operated by an overhead camshaft. Deliveries will not commence for some little time and the only model so far announced is an open two-seater. Of attractive appearance, it has a two-door coachbuilt body, with a high waistline and finished in grey cellulose. A substantial hood is fitted, while good visibility is provided by the single-panel Triplex screen.

The seat squab is designed to hinge forward, so giving access to the boot wherein the spare wheel, toolkit and luggage are housed. The side-screen equipment is of the peg-in type and each screen is provided with a signalling flap.

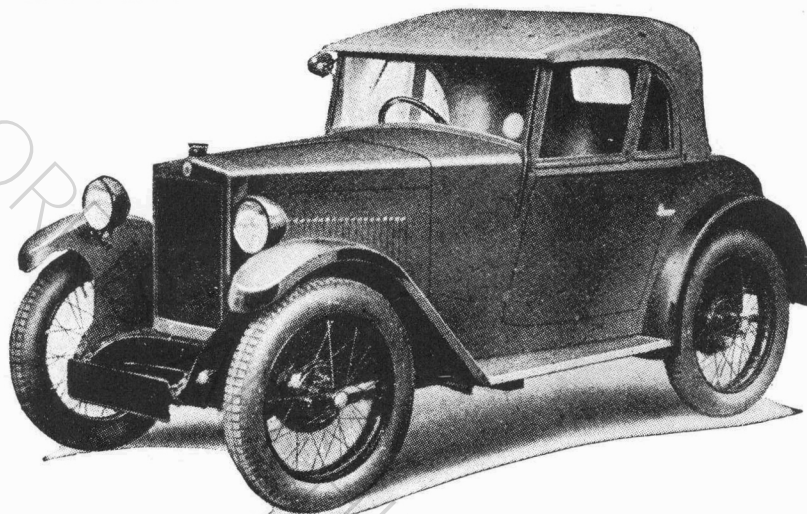
### Economy of Maintenance.

The tax is £8, a speed of 50 m.p.h. will be possible and the fuel consumption is slightly over 40 m.p.g.

The four-cylinder engine has the same bore and stroke dimensions as the present Morris Minor—namely, 57 mm. and 83 mm. It has side valves and the cylinder head is detachable. A forced-feed system of lubrication is employed, fuel is fed from the dash-situated fuel tank by an S.U. automatic carburetter, and Lucas coil ignition, electric lighting and starting are provided. The gearbox provides three forward speeds and is built in unit with the engine, while the transmission system comprises a tubular propeller shaft with a fabric universal joint at each end, the final drive being by spiral bevel.

The dynamo is carried in a bracket mounted on top of the cylinder head,

base is 6 ft. 6 ins. and the track 3 ft. 6 ins. Four-wheel brakes are standard, and these are designed on exactly similar lines to those of the present model. Considering the price the equipment



This view shows the black finished radiator, the substantial hood, side screens with signalling flaps and the single-panel windscreen which is fitted with Triplex glass.

is remarkably complete, including combined head and side lamps, five detachable wire wheels with Dunlop tyres, jack, tyre pump, tool kit, Triplex glass, windscreen, speedometer, oil gauge, automatic screen wiper, licence holder and driving mirror.

Equipment: Hood, side screens, hood envelope, single-pane Triplex screen, driving mirror, licence holder, speedometer, oil gauge, ammeter, facia lamp, and automatic screen wiper.

Wheelbase: 6 ft. 6 ins.; track, 3 ft. 6 ins.