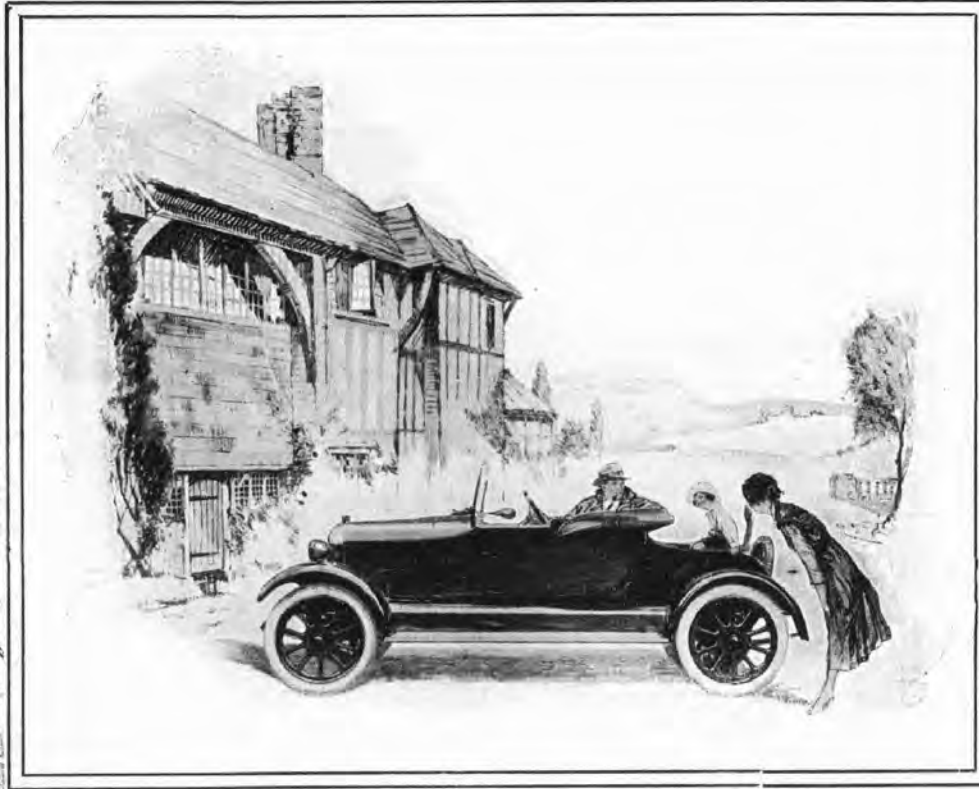




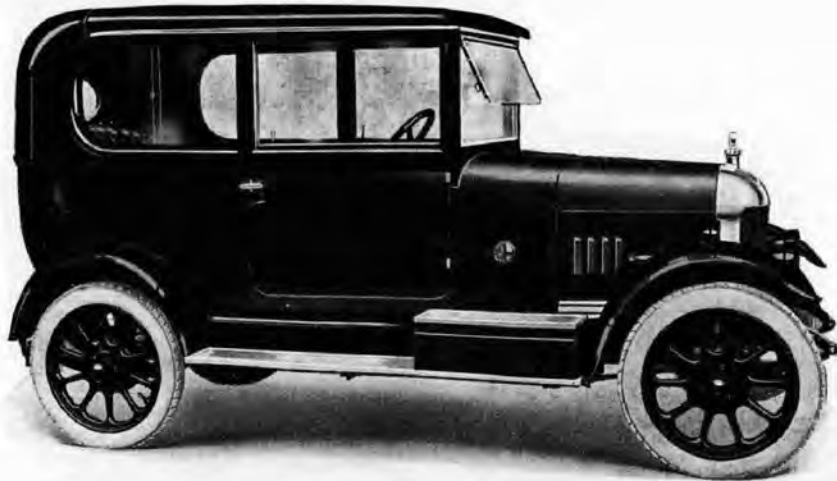
# MORRIS CARS



Nov. 1st, 1923

*All Previous Lists Cancelled.*

MORRIS MOTORS, Ltd.

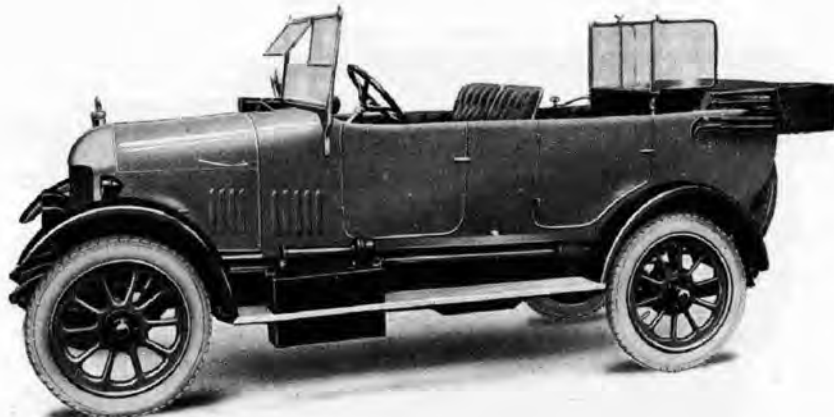
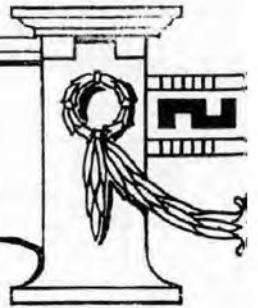


14/28 h.p. Morris-Oxford Saloon 4-seater

(R.A.C. rating 13.9)

Chassis as below, front windows mechanically operated, back windows sliding, upholstered in grey cord cloth, front seats adjustable, with two doors of ample width. A car of unusual luxury and refinement

Price - £395

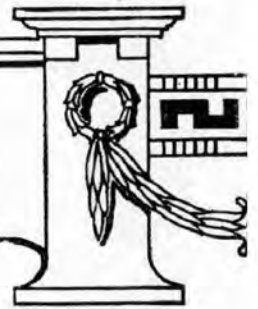
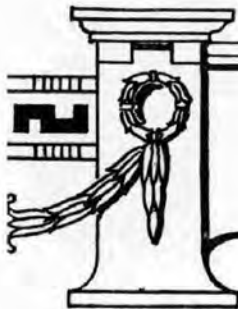


14/28 h.p. Morris-Oxford 4-5 Seater

(R.A.C. rating 13.9)

Chassis details as above, improved body of greater dimensions, with all-weather hood, mottled grey leather upholstery, four doors, sliding front seats, triple screen, folding back screen and luggage grid, painted grey, dark blue, green or claret colours to choice

Price - £320



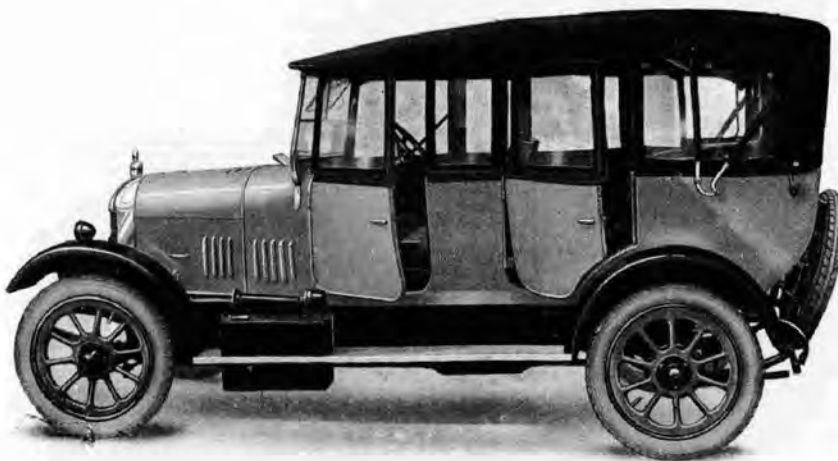


14/28 h.p. Morris-Oxford Cabriolet 4-seater

(R.A.C. rating 13.9)

Chassis as below, with latest improvements, adjustable front seats, frameless windows mechanically operated, upholstered in antique grey leather, two doors of ample width

Price - £385



14/28 h.p. Morris-Oxford 4-5 Seater with All-weather Hood erected

(R.A.C. rating 13.9)

This hood is instantly adjustable with panels which open with the doors, and can be used independently as side-screens

Price - £320



14/28 h.p. Morris-Oxford Cabriolet 4-seater

(R.A.C. rating 13.9)

Chassis as below, open, and instantly transformed into a Touring Car of the highest appearance and quality

Price - £385



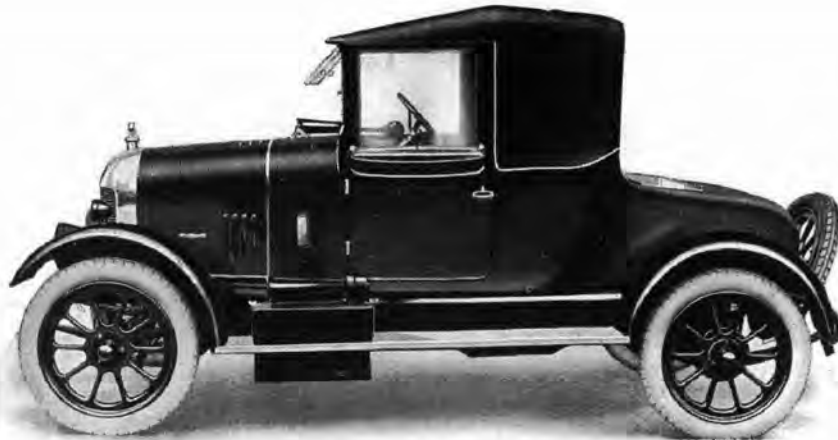
14/28 h.p. Morris-Oxford 4-5 Seater

(R.A.C. rating 13.9)

showing the Wheel Carrier in use as a luggage grid

Price - £320



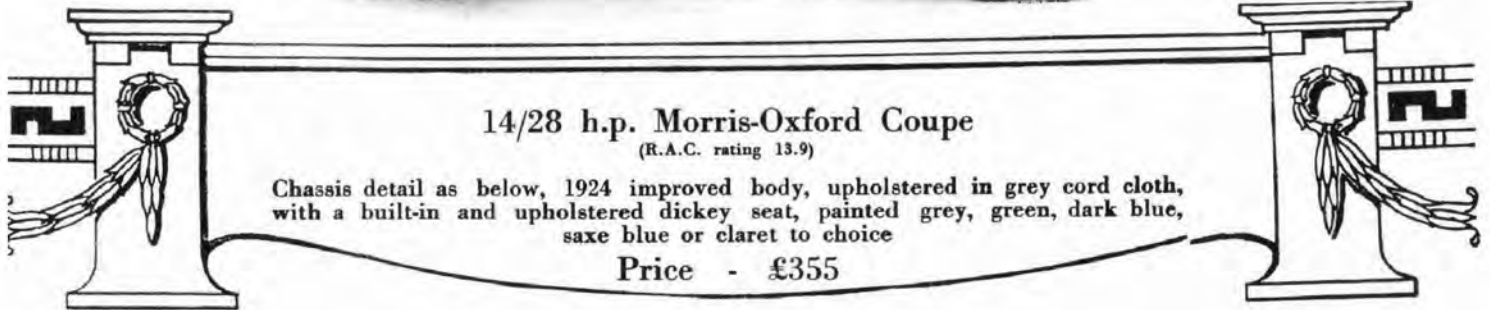


### 14/28 h.p. Morris-Oxford Coupe

(R.A.C. rating 13.9)

Chassis detail as below, 1924 improved body, upholstered in grey cord cloth, with a built-in and upholstered dickey seat, painted grey, green, dark blue, saxe blue or claret to choice

Price - £355



### 14/28 Morris-Oxford 2-seater

(R.A.C. rating 13.9)

Chassis details as above, improved body with triple screen, upholstered mottled grey leather and built-in dickey seat with folding wind screen and apron. Hood bag and hood with curtains opening with doors, painted grey, green, claret or dark blue

Price - £300







## GENERAL SPECIFICATION OF MORRIS-OXFORD CARS

**ENGINE** Morris, manufactured at our own factory at Coventry (Morris Engines [Coventry] Ltd.). Four-cylinder monobloc, valves interchangeable arranged on the nearside, adjustable valve tappets, all valves enclosed by quick detachable oil-tight cover plate. Detachable Cylinder head.  $1\frac{1}{2}$  h.p., bore  $75 \times 102$ , cubic capacity 1805.5 c.c.

**CRANKSHAFT** Offset, run in three bearings, flywheel enclosed. White metal bronze backed bearings to crank and con rods.

**CARBURETTOR** Smith 5-jet, automatic, gravity fed, control by foot accelerator pedal. Petrol supply from tank carried in the scuttle dash; capacity  $5\frac{1}{2}$  gals., filling orifice inside bonnet.

**LUBRICATION** Automatic, by plunger pump driven from an additional eccentric on cam-shaft. The pump itself is submerged in the oil sump with an easily detachable gauze filter screwed into outside of sump. An oil-gauge is fitted to the dashboard to show that the oil pump is working. A graduated dipper gauge is situated in the side of the crankcase to indicate the quantity of oil in the sump. This gauge forms the central portion of a large filler orifice combined with crankcase breather, and it will be found on the offside of the engine on lifting the bonnet. Oil passes from the pump to the main bearings, timing gear and cross shaft, and keeps up the level of oil in the troughs under the con rod big end dippers; all other bearings and pistons receive oil by splash, suitable galleries being arranged for the former. Provision is made in the troughs to ensure a full supply of oil when ascending steep hills, and when descending the oil level in troughs is decreased. This lubricating arrangement is simple and reliable and gives a practically smokeless exhaust. To facilitate chassis lubrication and to make the operation as simple as possible, we have included on all models the famous Enots pump lubrication system.

**IGNITION** High Tension Lucas Magneto, variable type located above the timing gear and driven by cross shaft, such shaft running by skew gearing, commutator and distributor of the magneto thus being very accessible for attention, as they face you immediately on opening the bonnet. Advance and Retard to Magneto worked by lever fixed to the Steering-gear column. K.L.G. sparking plugs.

**GEAR BOX** Three speeds, forward and reverse, direct drive on top, speeds operated by central or left-hand control lever. Gear wheels are mounted on short stiff castellated shafts running on ball bearings. The box containing the gears is all cast aluminium, and bolted direct to the flywheel housing of the engine, thus forming a complete power unit. Gear ratios—1st, 15.2 to 1; 2nd, 8.17 to 1; top, 4.75 to 1; reverse, 18.5 to 1. A large oil level plug is provided, cast on side of gear box casing.

**CLUTCH** This runs in a separate compartment formed between the engine and the gear box and requires no attention. It is of the four-plate type, fitted with cork insets automatically lubricated from the engine. An Inspection Lid is fitted immediately above the clutch casing. A ball thrust is provided for the withdrawal motion. The spigot for the clutch shaft runs in a self-aligning ball bearing in the end of the crankshaft.

**UNIVERSAL JOINT** Of the ring and stud type, running in the spherical housing immediately behind the gear box, thereby enclosed and lubricated from the gear box.

**CONTROL** Change speed lever and hand brake are situated in the centre of the chassis, or on the left hand of the driver immediately above the gear box. Foot and brake pedals as usual.

**TRANSMISSION** By Propeller Shaft entirely enclosed in Torque Tube, thus forming a weather and dust-proof system. The final drive of the back axle is by helical bevel gear.



**STEERING GEAR** Worm and wheel type, irreversible, ball thrusts provided at top and bottom of column, hardened worm wheel shaft carried in two bearings, one on either side. The whole gear is bolted to the side of the engine and supported higher up from the flywheel housing, on a bracket which forms the foot accelerator pedal support. The steering is extremely light, and further support is provided to the steering column by bracket attached to dashboard.

**COOLING** Thermo syphon, with extra large water pipes. The Radiator is of our distinctive V shape, and has been redesigned with greater capacity. A three-blade cast aluminium fan running on ball bearings assists the cooling, driven from a pulley on the engine cam shaft by V link belt; easy adjustment of the belt is obtained by an eccentric mounting of the fan shaft.

**FRONT AXLE** H. section forging of high tensile steel, swivel axle arms mounted on hardened and ground pins fitted with Enots lubricator caps. The front wheels are fitted with large diameter Journal Ball Bearings, special provision being made for exclusion of dirt and damp. Steering arms are bushed with bronze for the steering cross-rod bolts. This cross-rod is screwed to provide easy adjustment for wheel alignment. All forgings are heat-treated in pyrometer controlled furnaces.

**BACK AXLE** Three-quarter floating type constructed by the use of steel pressings of banjo shape, thus providing great rigidity with lightness. The driving shafts are mounted on ball bearings and can be withdrawn without disturbing the brakes and brake drums, thus allowing easy removal of the differential gear, and avoiding taking the whole back axle away from the car. The differential is of the bevel type with four pinions and runs on specially constructed large load and thrust ball bearings. An oil filler is provided in an accessible position in the centre of the back casing cover, which also acts as an oil level gauge. A drain plug is also provided.

**BRAKES** Operated by hand lever and foot pedal, both on the back wheels, placed side by side. They are of the internal expanding type lined with highest class material, and shields are provided to exclude all dust and dirt. The operating shafts are surface-hardened and ground, mounted in bronze bushes. Brake Drums are of ample dimensions. A very powerful braking effect is obtained with the minimum of effort by the driver. An arrangement is fitted to the Torque Tube to support all the brake rods to eliminate rattles. Turnbuckles fitted to rods provide quick adjustment.

**FRAME** Channel section pressed steel, straight throughout full length, designed to give rigidity and lightness.

**SUSPENSION** The front springs are semi-elliptic, back springs three-quarter elliptic, attached to the rear axle by underslung spring pads. The springs are bolted to the frame and shackles with hardened and ground steel shackle bolts, these being fitted with Enots system of pump lubrication. All Springs are covered with Leather Gaiters. A complete set of four Gabriel Snubber shock absorbers are included on Oxford models.

**WHEELS** Detachable, pressed steel, spoked type, size  $28 \times 3\frac{1}{2}$ . A hand brace is included in the Tool Kit to facilitate the quick removal of the wheels, which are mounted on three studs with nuts and spring washers.

**TYRES**  $28 \times 3\frac{1}{2}$  Dunlop Cord on all five wheels.

**TOOL KIT** 1 Jack, 1 Jack Handle, 1 Pump (Tyre), 1 Wheel Brace, 1 Tool Box on Four-seater, 3 Tubular Box Spanners and Tommy, 3 Double-ended Spanners, 1 Cold Chisel, 1 Half-round File with Handle, 1 gin. Adjusting Spanner, 1 6in. Steel Punch, 1 Screwdriver, 1 Magneto Spanner, 1 Jet Key, 1 Dynamotor Adjusting Spanner, 1 Lubricating Pump for Enots system, 1 Pair Pliers, 1 Hammer, 1 Sparking Plug Box Spanner, 1 Cylinder Head Box Spanner, 3 Tappet Spanners, 3 Tyre Levers, 1 Oil Can, 1 Tool bag on Two-seater and Coupé models.

**GENERAL EQUIPMENT** Mudguards, Dee shape, give ample protection. All metal parts, including Radiator, are nickel finish. An unusually complete Tool Kit is provided. Metal Valances are fitted between the body and running boards. The bulb horn which is supplied is of latest type, black finish. Also a high-class electric horn is included. The five lamps are of black ebony finish. The tools are carried in a special locked tool box, mounted on running board on the 4-seater models only. Enots pump lubrication to all parts of chassis where necessary. Flush type speedometer, driving mirror, 8-day dashboard clock, petrol gauge, oil gauge, electric lamp to dashboard, Boyce motometer, spare petrol can and carrier, and licence holder; all of which form an entirely complete equipment. Side lamp brackets for oil or acetylene lamps are also provided for use in emergency.



## PRINCIPAL DIMENSIONS

14/28 h.p. (R.A.C. rating 13.0 h.p.) Engine, bore 75 m/m., stroke 102 m/m., cubic capacity 1805.5 c.c.  
 Overall length, 4-seater, 13ft. 2-seater and coupé, 12ft. 1in. Cabriolet and Saloon, 12ft. 3in.  
 Overall width, 4ft. 10in.  
 Width of chassis frame, 2ft.  
 Body space from dashboard to end of frame, 6ft. 4in.  
 Overall height, 2 and 4-seaters, 6ft. Coupé, 5ft. 10in. Cabriolet and Saloon, 6ft. 2in.  
 Weight, 2-seater, 17½cwts. Coupé, 18½cwts. 4-seater, 18½cwts. Cabriolet 20cwts. Saloon 20cwts.  
 Chassis, 14½cwts.  
 Ground clearance, 8½in. Wheel track, 4ft. Wheel base, 8ft. 6in.  
 Diameter of turning circle, approximately 35ft.  
 Speed of car on direct gear, 4/50 m.p.h.  
 Petrol consumption, 30/35 m.p.g. Oil consumption, 1,000/1,500 m.p.g.

## BODY DIMENSIONS

Four-seater. Width front seat, 41½in. Width back seat, 44in.  
 Two-seater. Width front seat, 40in. Width dickey seat, 30in.  
 Two-seater and Coupé. Distance edge of front seat to pedals, 18in.  
 Two-seater and Coupé. Distance squab of front seat to pedals, 38in.  
 Two-seater and Coupé. Depth of seat front to rear, 17½in.  
 Four-seater. Distance edge of adjustable seat to pedals, 30in.-15in.  
 Four-seater. Depth back seat front to rear, 18in.

## BODY

### Touring Models—2 and 4-seaters

First grade flush-sided streamline torpedo, produced in our own works, and manufactured from finest possible materials, upholstered in best quality antique finish grey leather, painted dark blue, claret, bronze green or grey; to choice. One-man all-weather black mohair hood, fitted with side curtains which open with the doors, and can be used independently as side screens when the hood is down. Three-piece front screens and best grey carpets to footboards.

With the 4-seater model, the front seats are instantly adjustable to the requirements of the driver, and a four-panel rear screen with apron is fitted for the comfort of the back passengers. Four doors are provided, the driver being able to enter from either side. The 2-seater includes a fully upholstered dickey seat built in to the body, with a folding windscreen and apron. The spare wheel, with both the 2 and 4-seater models, is carried at the back of the car, and in the 4-seater only the spare wheel carrier can be adjusted, so as to form a luggage grid of ample dimensions. Blank number plates are provided.

### Morris-Oxford Coupe, Cabriolet and Saloon

The Coupé body is upholstered in grey cord cloth and will be painted to choice in claret, dark blue, saxe blue, bronze green or grey. This model is also supplied with a fully upholstered dickey seat at the back built into the body.

The Cabriolet body is upholstered in our standard antique finish leather, with pile carpets, 2 doors of ample width are provided, and the windows are operated by mechanical window regulators. The front seats are folding and adjustable.

In the Saloon model the front windows are operated by mechanical regulators, the back windows sliding horizontally. The car is upholstered in cord cloth.

Saloon and Cabriolet models are supplied painted in dark blue, claret, grey or bronze green to choice.

## LUCAS ELECTRIC LIGHTING AND STARTING SET, OF THE HIGHEST CLASS

By use of a single unit dynamotor, mounted on an extension of the gear-box side casing, the drive being by silent chain, entirely enclosed and automatically lubricated. The eccentric mounting of the dynamotor allows easy adjustment for the chain. This method of drive and situation of dynamotor has been adopted after very careful tests. Five lamps (12 volt.) are included, also flush type switch-box mounted on the dashboard of the body. The battery is carried on the near-side running board: this is very accessible for removal or inspection. Charging rate is normally 8 to 10 amperes.





# MORRIS-COWLEY

## 11.9 h.p. CAR SPECIFICATIONS

4-seater, "Occasional Four" and 2-seater

These models, to be known as the Morris-Cowley 11.9 h.p. only, are, except for the horse-power practically the same as the Morris-Oxford touring models, but are turned out in modified forms to cater for the purchaser who does not require the additional refinements of the Oxford models.

The following points in the specification are exactly the same as the Morris-Oxford:—Starter, Ignition, Gear Box, Clutch, Universal Joint, Control, Transmission, Steering Gear, Cooling System, except size of radiator, Front Axle, Back Axle, Brakes, Frame, Suspension, Principal Dimensions, also all material used in the chassis construction. Enots Pump Lubrication System, Clock, Speedometer, Petrol Gauge and Oil Gauge are included on all Cowley cars.

The following alterations from the specification of the Morris-Oxford model show how the price of the Morris-Cowley has been brought down in comparison with the Morris-Oxford:—

**ENGINE** 11.9 h.p., bore 69.5, stroke 102, cubic capacity 1550 c.c., single-jet Smith carburettor. Other details same as the 13.9 h.p. Morris-Oxford Engine. A.C. Sparking Plugs.

**WHEELS** 28 × 3½ detachable steel, tyres 28 × 3½ Dunlop Clipper Cord.

**BODY** These are somewhat similar to the Morris-Oxford in the 2 and 4-seaters, but of less expensive design, and upholstered in grey leather cloth. Side curtains are included, which can be used as side screens independently of the hood, and also a hood bag. One door with the 2-seater and "Occasional Four." Two doors with 4-seater, both on near side. In the "Occasional Four" both front seats tip up, and are independently adjustable, back seats folding, and placed on either side of the car. A single windscreen is supplied with the 2-seater, and double adjustable sloping windscreens with the 4-seater and "Occasional Four." Electric lighting and starting set as for Morris-Oxford models. Mudguards Dee-shaped. Tool bags are supplied for the 2-seater model.

## DIMENSIONS

Overall width, all models, 4ft. 10in.

Overall length, 4-seater 12ft. 6in., 2-seater 12ft., "Occasional Four" 12ft.

Width front seat, 4-seater 38in., 2-seater 38in.

Width back seats, 4-seater 39in., "Occasional Four" 14in.

Distance foot pedals to edge of front seat, 4-seater 18in., 2-seater 18in.

Distance foot pedals to squab of front seat, 4-seater 36in., 2-seater 36in.

Weight, 4-seater 18cwt., 2-seater 17½cwt., "Occasional Four" 18cwt.

Ground clearance, 8½in.

Track, 4ft. Wheel base, 8ft. 6in.

Speed on direct gear, 4 to 45 m.p.h.

**EXTRA** Gabriel Snubbers, set of four, can be fitted at an extra charge of £6 6s. od.

Subject to same conditions of sale as those set out for the Morris-Oxford model. There will be no deviation made from the specification, even of tyres.



### 11.9 h.p. Morris-Cowley 4-seater



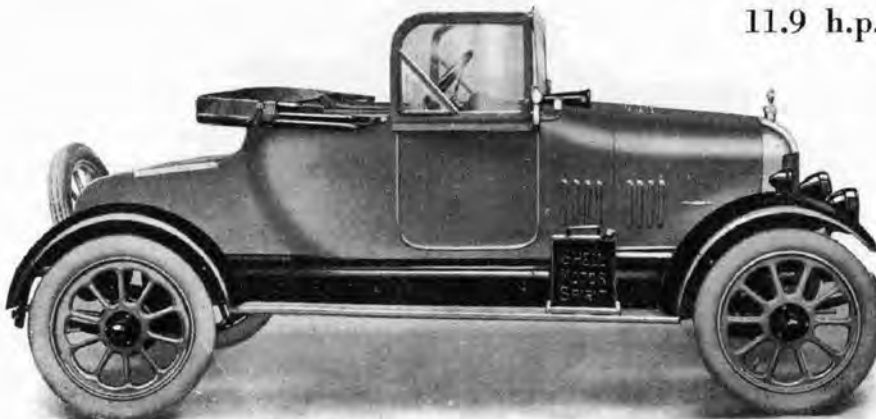
Chassis detail as overleaf, body painted grey and upholstered in grey antique leather cloth, double screen, hood bag and hood with side curtains which open with the door, and can be used independently as side screens.

Self-starter and dash-board equipment, including speedometer, 8-day clock, petrol gauge and oil gauge, spare petrol can and carrier.

Price - £225

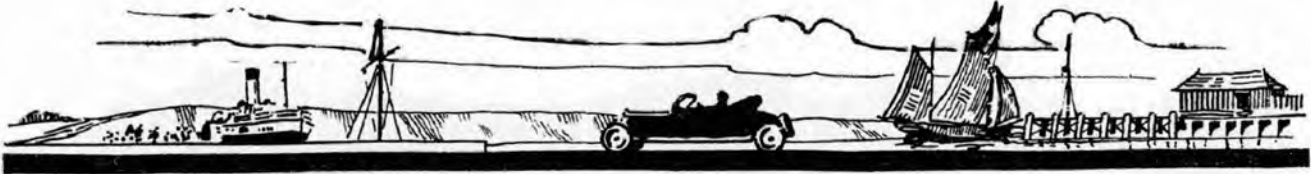


### 11.9 h.p. Morris-Cowley 2-seater



With side-curtains in use independently as side screens

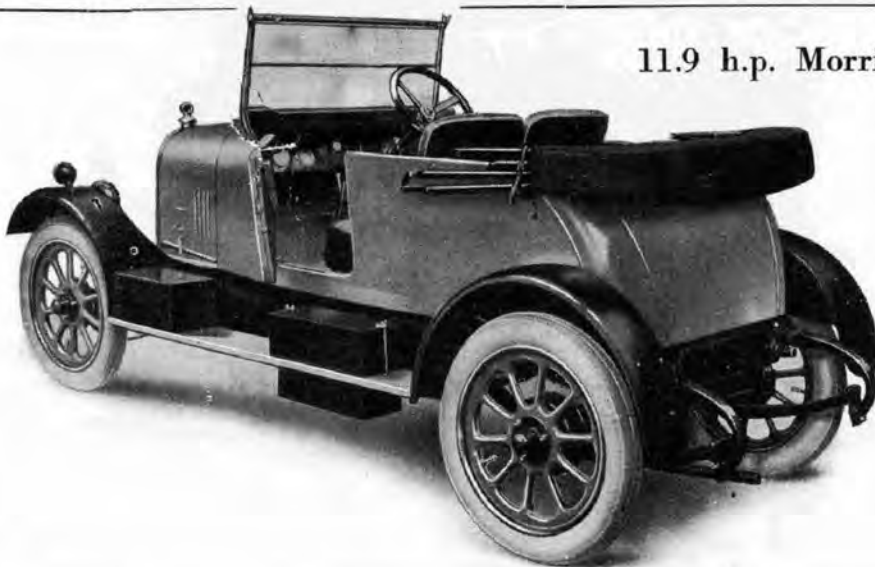
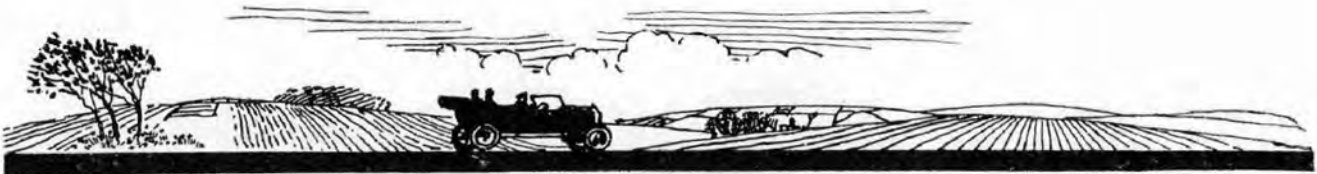
Price - £198



11.9 h.p. Morris-Cowley 4-seater

With hood erected, showing great visibility and complete protection

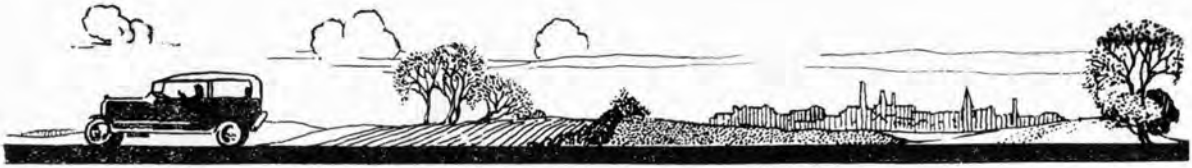
Price - £225



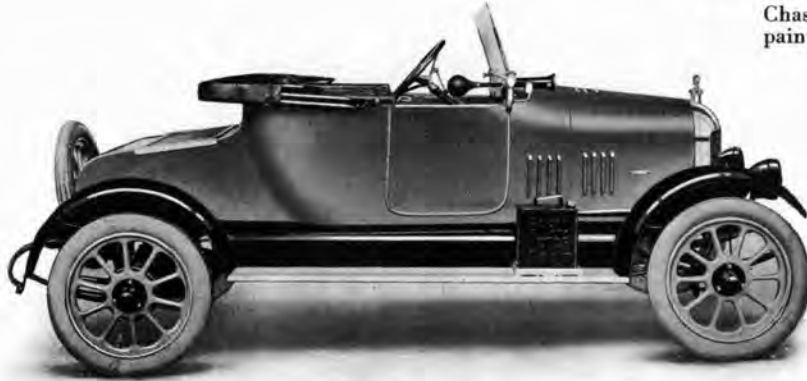
11.9 h.p. Morris-Cowley Occasional Four

Chassis as overleaf, body painted grey and upholstered in antique grey leather cloth, front seats folding and independently adjustable, double windscreen, side curtains opening with the door, folding back seats, bringing either passengers or luggage under the protection of the hood

Price - £215



### 11.9 h.p. Morris-Cowley 2-seater



Chassis painted grey and upholstered grey antique leather cloth, single screen, hood bag and hood with side-curtains which open with the door.

Equipment includes: Speedometer, 8-day clock, petrol gauge, oil gauge, spare petrol can and carrier

Price - £198



### 11.9 h.p. Morris-Cowley Occasional Four



With hood erected, showing the ample protection provided

Price - £215

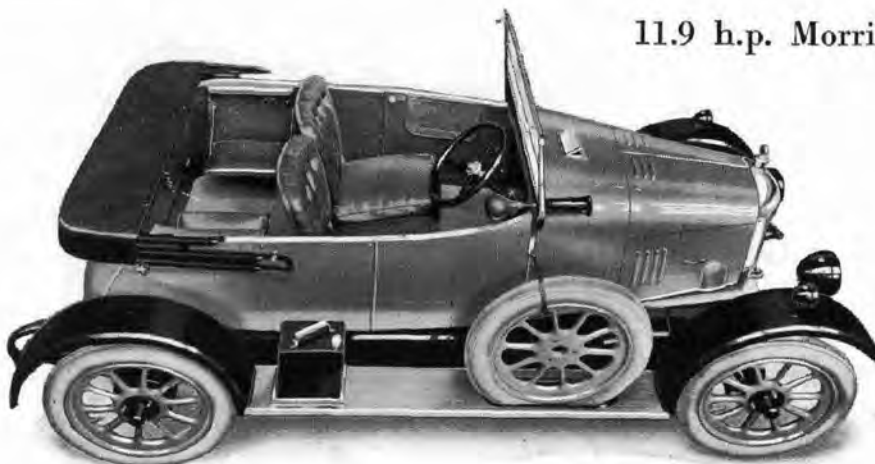




11.9 h.p. Morris-Cowley 2-seater

With hood erected,  
showing complete  
protection provided

Price - £198



11.9 h.p. Morris-Cowley Occasional Four

View in plan, show-  
ing disposition of  
seating accommo-  
dation

Price - £215



## GUARANTEE

We give the following guarantee with our Motor Cars instead of the guarantee imposed or implied by statute, or otherwise, as to the quality or fitness of such machines for the purpose required; any such guarantee being in all circumstances excluded. On the sale of Cars which have been used for "hiring out" purposes, and on the sale of secondhand Cars, no guarantee of any kind is given or is to be implied.

We guarantee, subject to the conditions mentioned below, that all precautions which are usual and reasonable have been taken by us to secure excellence of materials and workmanship, but this guarantee is to extend and be in force TWELVE MONTHS only from the date of delivery from our Works, and damages for which we make ourselves responsible under this guarantee are limited to the replacement of any part which may have proved defective. In the case of a purchase from a Dealer, the guarantee dates from the day of delivery to the Dealer from our Works. We undertake, subject to the conditions mentioned below, to make good at any time, within twelve months, any defects in these respects. As Motor Cars are easily liable to derangement by neglect or misuse, this guarantee does not apply to defects caused by wear and tear, misuse, or neglect.

For the information of those who fit their own bodies to our Chassis, we accept no responsibility if the total weight of the car, with Body, exceeds 18½ cwt. complete and ready for the road.

### CONDITIONS OF GUARANTEE

If a defective part should be found in a Morris Light Car it must be sent to us by passenger train, carriage paid, and accompanied by an intimation from the sender that he desires to have it repaired free of charge under our guarantee, and he must also furnish us at the same time with the number of the Car and Engine, the name of the Dealer from whom he purchased, and the date of the purchase. Failing compliance with the above, no notice will be taken of anything which may arrive, but such articles will lie here at the risk of the senders, and this guarantee, and any implied guarantee, shall not be enforceable.

We guarantee only those Cars which are bought either direct from us or from one of our duly authorised Dealers, and under no other conditions.

We do not guarantee the specialities of other firms, such as tyres, lamps, magneto, electrical equipment, etc., or any component part supplied to the order of the purchaser differing from our standard specification, supplied with our Motor Cars, or otherwise. The condition of this guarantee is such, that if the motor vehicle to which it applies is altered or repaired outside our factory or the shops of our authorised Dealers without our permission in writing, all our liability under this guarantee shall cease.

The purchaser understands and agrees that no guarantee of the Morris Light Car is made, or authorised to be made, by the Company other than that herein above set forth. MORRIS MOTORS, LTD.

**THE TERM DEALER** is used in a complimentary sense only, and those firms whom we style our Dealers are not authorised to advertise, incur any debts, or transact any business whatsoever, on our behalf, other than the sale of goods which they may purchase from us; nor are they authorised to give any warranty or make any representation on our behalf other than those contained in the above guarantee.





## PRICES OF COMPLETE CARS

11.9 h.p. Morris-Cowley 2-seater, complete	..	..	..	..	..	£198
11.9 h.p. Morris-Cowley Occasional Four, complete	..	..	..	..	..	£215
11.9 h.p. Morris-Cowley 4-seater, complete	..	..	..	..	..	£225
13.9 h.p. Morris-Oxford 2-seater, complete	..	..	..	..	..	£300
13.9 h.p. Morris-Oxford 4-seater, complete	..	..	..	..	..	£320
13.9 h.p. Morris-Oxford 2-seater Coupé, complete	..	..	..	..	..	£355
13.9 h.p. Morris-Oxford 4-seater Cabriolet	..	..	..	..	..	£385
13.9 h.p. Morris-Oxford 4-seater Saloon	..	..	..	..	..	£395

## PRICES OF CHASSIS

11.9 h.p. Morris-Cowley Chassis, 2-seater	..	..	..	..	..	£160
11.9 h.p. Morris-Cowley Chassis, 4-seater	..	..	..	..	..	£165
13.9 h.p. Morris Oxford Chassis	..	..	..	..	..	£195

### CHASSIS EQUIPMENT—Morris-Oxford and Morris-Cowley

The above chassis prices include the following only :

Tool bag. Set of tools. Five wheels and tyres. Dynamotor lighting and starting set, comprising : Five lamps, set of cables and sundries, battery, switchbox, battery box lid and fasteners, junction box, battery box support strips (2). Enots shackle lubricating system and gun. Bonnet. Bonnet fasteners. Bonnet rod and rest. Petrol tank and piping. Two head lamp brackets. Running board brackets. Cross stays. Number plates. Air control rod. Air control bracket. Throttle control rod. Throttle control rod bracket. Magneto control complete. Oil gauge. Steering column steady bracket. Manufacturers' name plate.

Set of four Gabriel snubbers are included in Morris-Oxford chassis only.

The following extras can be supplied for chassis, home and export, when ordered actually with the chassis.

Item.	No. per set.	Price. per set. £ s. d.	Item.	No. per set.	Price per set.
Mudguards with stays ...	4	3 8 0	Petrol can carrier ...	—	0 10 8
Wheel Carrier, Cowley 2-seater ...	—	0 17 6	Boyce Motometer ...	—	1 1 0
Wheel carrier, Oxford 2-seater ...	—	1 2 6	Bulb horn, Cowley ...	—	0 15 8
Wheel trough, Cowley 4-seater ...	—	0 5 0	Bulb horn, Oxford ...	—	1 1 0
Wheel carrier, Oxford coupé ...	—	1 2 6	Electric horn, Oxford ...	—	2 5 0
Wheel Carrier, Oxford 4-seater ...	—	2 2 0	Festoon lamp ...	—	0 15 6
Speedometer, Smith's list ...	—	5 15 0	Driving mirror ...	—	0 13 8
Clock ...	—	2 12 6	Licence holder ...	—	0 3 8
Petrol gauge and fittings... ..	—	0 12 6	Plated hub caps, extra for Cowley chassis ...	4	0 16 0
Metal valances ...	—	1 0 0	Plated hub nuts ...	12	0 4 0

NOTE.—All prices are subject to the delivery charges from our works, which our Dealers are authorised to collect





## TERMS OF BUSINESS

**CONDITION OF PURCHASE** Purchasers of Morris Light Cars will note that the cars are sold subject only to the Terms of Guarantee, and to the General Conditions of the Sale herein contained, and on the distinct understanding that the vehicle purchased shall not be exhibited, either directly or indirectly, at any exhibition or Agricultural Show in the United Kingdom of Great Britain or in Ireland, without the written authority of Morris Motors, Ltd.

**PAYMENT** Net Cash. One-third of total cost with order, and balance upon receipt of invoice when car is ready at works.

**DELIVERY** The prices quoted are for delivery at our Works at Cowley, near Oxford, and are strictly net on the following terms — One-third of the purchase money to accompany order, balance to be paid on advice that the Car is ready for delivery. Packing for shipment is not carried out by us, but by packing specialists; we take no responsibility for their work. Any time of delivery named in any of our Contracts or correspondence is absolutely contingent upon war, strikes, lock-outs, trade disputes, accidents, fire, delay or failure of sub-contractors to complete their contracts, or any other unforeseen circumstances, and should delivery be delayed in consequence of any, or either, of the foregoing contingencies, the Company will not be responsible for any damages caused by such delay. Cars will be delivered by the Company's Authorised Dealers to customers, at a charge to be arrived at, ~~adding~~ a rate of 9d. (ninepence) per mile.

**SPARE PARTS** We endeavour to keep in stock for immediate delivery a full series of all parts of our vehicles that are liable to wear or to damage by accident. When ordering spares, the number of the parts should be quoted, if possible, AND IN EVERY CASE THE NUMBER OF THE ENGINE AND CAR. Full instructions concerning this matter will be found in our Spare Parts List.

We reserve the right to, at any time, alter any part which may be sent to us as may be considered advantageous or necessary, or to revise List Prices and Specifications contained in this Catalogue without notice, also to hand over the order to our local agent in your district.

Morris Motors, Ltd., beg to point out the fact that they do not, under any circumstances, undertake the fitting of additional accessories of any kind, nor will they deviate from their standard specifications, owing to such details interfering with the general output.

Should Morris Motors, Ltd., cease to manufacture a car of the type or model ordered (whether estimated date of delivery has arrived or not), Morris Motors, Ltd., shall be at liberty to return the deposit paid on the order to the purchaser, and declare their contract to be at an end without any further liability.

Wires:  
"Voiturette,"  
Cowley-Oxon.

**MORRIS MOTORS, LTD.**  
**COWLEY, OXON.**

Phone:  
2, 3, 4 & 5,  
Cowley-Oxon.  
(Pte. Brch. Ex.)

Over 100 Sole Dealers of excellent repute handle the Morris Car in Great Britain and Ireland, together with several hundred Sub-Dealers. A note to Cowley will put you in touch with your local dealer, from whom we strongly recommend you to purchase, and so obtain full benefit from the "Morris Service."

